

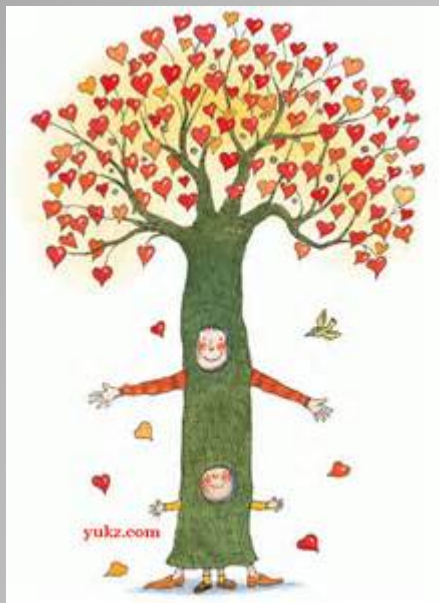
Introduction to Counseling & Clinical Psychology Department

劉志如



國立東華大學
National Dong Hwa University





- 在這個地方你可以期待什麼？

What you can look forward in this place

- 在這個地方你可以如何裝備自己？

What you can do to prepare yourself in this place

- 期待**四年後**的形象？

What looking forward you will be **four years later**



- Department Educational goals and characteristics
- Introduction to Environmental and Equipment
- Introduction to Faculties
- Introduction to program
- Career route

諮商與臨床心理系



- exploring relevant issues of research in counseling and clinical psychology
- emphasizing counseling strategies and clinical skills in the treatment of special problems for minority groups
- developing the counseling and clinical psychology disciplines in both theory and practices
- emphasizing the science-practitioner orientation in teaching and research

Our Features



Educational goals



1. The department will train students to have a basic knowledge of psychology both in the humanities and the sciences; students will be able to apply their knowledge critically.
2. The department will focus professional training as well as lifetime education.
3. The department will focus on the students' ability to communicate and will promote their ability to provide social services.
4. The department will help students to expand their global and multicultural thinking.

教學環境設備簡介

個別諮商室，共4小間，位置：人社二館B301（共B301
(counseling Room, location: Humanities and Social Sciences BuildingII B301)



個諮室觀察窗及測驗櫃

教學環境設備簡介

- 團體諮商室，位置：人社二館共B304（Group Counseling Room, location: Humanities and Social Sciences BuildingII B304）



- 控制室，位置：人社二館共B303（Group Counseling Room, location: Humanities and Social Sciences BuildingII B303）



教學環境設備簡介

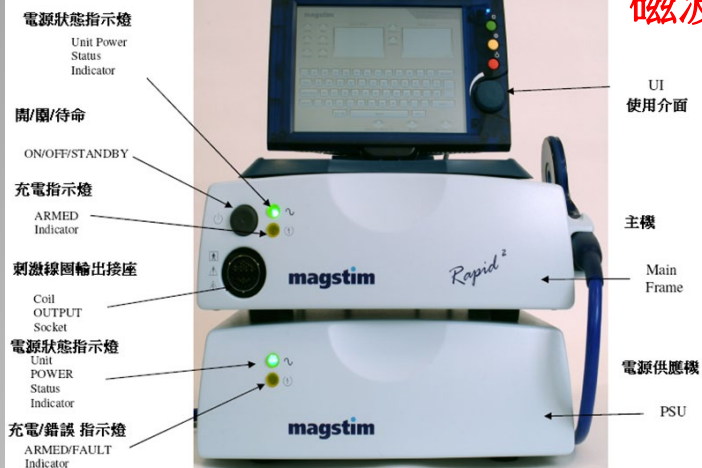
- 兒童遊戲室，位置：人社二館共B206（Play therapy Room, location: Humanities and Social Sciences BuildingII B206）



- 電腦教室位置：人社二館共B207（PC Room, location: Humanities and Social Sciences BuildingII B207）



2.1 RAPID²



磁波刺激器(TMS)



腦波耳機



腦波儀 (EEG)



師資陣容

- 基礎心理學組



Chou, Yu-Ju Ph.D , TMS, EYE movements



Lan, Yu-Ling Ph.D , measurement and statistics, program evaluation



Liu, Shiao-Hua Ph.D , EEG, Cognitive neuroscience, visual psychophysics



Lee, Ming-Ni Ph.D , Social and cultural psychology, dreaming and consciousness research

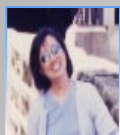
師資陣容—諮商心理學組



Wang, Chun-Chuan Ph.D , person-centered approach, grief counseling



Lin, Chi-Wei Ph.D , individual counseling, personality psychology, psychological Assessment



Chen, Shu-Chung Ph.D , individual/ group counseling, trans-cultural counseling



Wang, Yi-Chao Ph.D , counselor training and supervision, mental health, parenting education

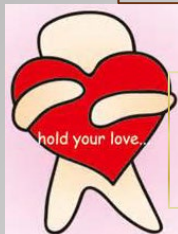


師資陣容-臨床心理學組

Wong, Shy-Herng Ph.D , developmental pathology,
children psychodynamics



Chiang, Shih-Kuang Ph.D , neuropsychology,
medical education



Theodore Mazarakis Ph.D , Sleep disorders,
psychopharmacology



Li, Shih-Ming Ph.D , mental health promotion,
adolescent psychotherapy



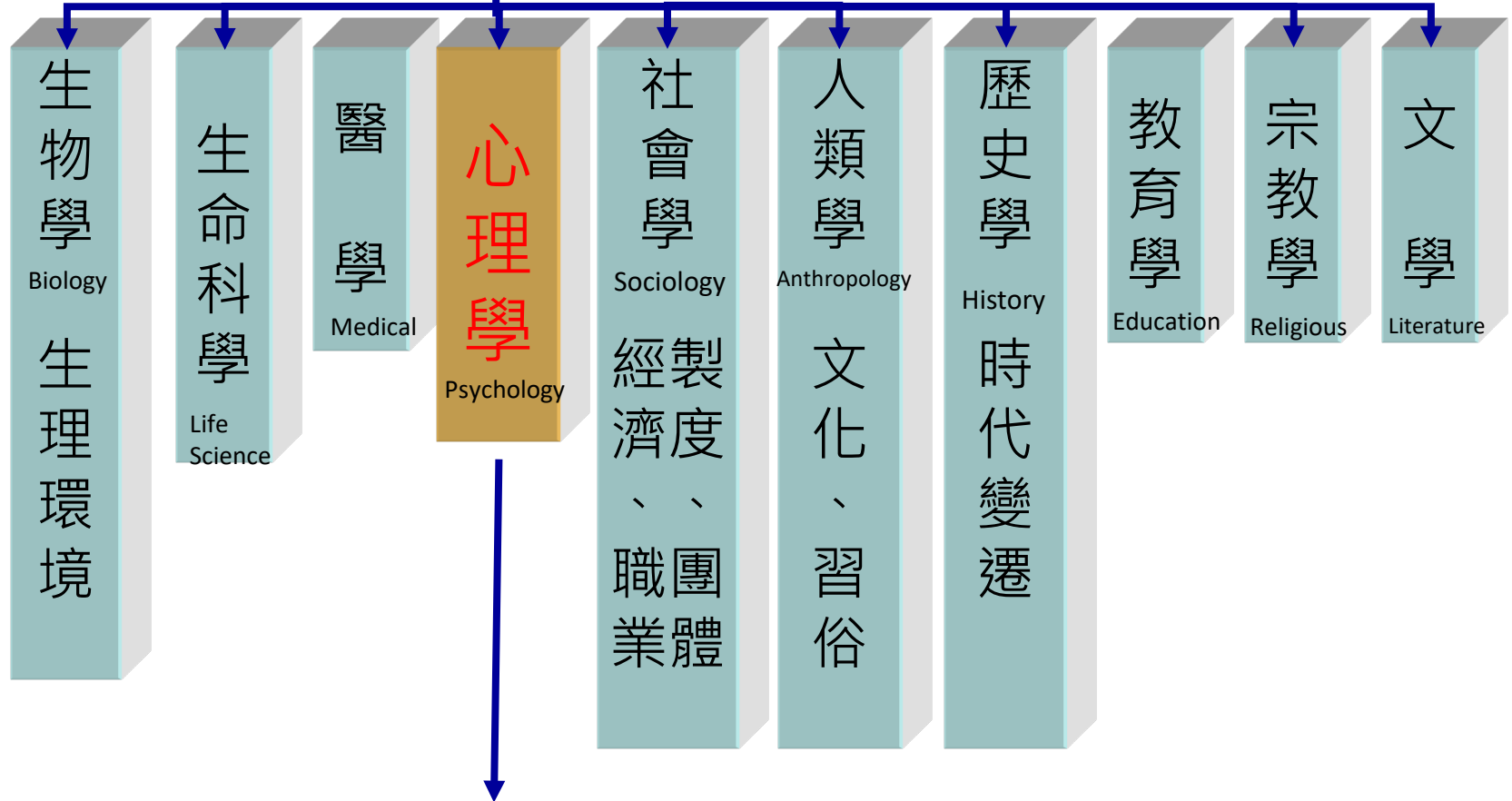
心理學在學門中所在的位置 (一)

Psychology in Academy

發現事物的真理、本貌、
反省與思考

To find the truth, appearance,
reflection and thinking

哲學philosophy



基礎心理學

Foundational Psychology

應用心理學

Applied Psychology

整合取向

Integration Approach

Clinical and Counseling in Psychology

Psychology

Foundational Psychology

- Statistic, Psychological Testing, Psychological Research
- Physiological Psychology, Neuropsychology
- Developmental Psychology
- Sensation and Perception
- Cognitive Psychology thinking , memory, language, problem solving skills, Decision making
- Learning Psychology
- Personality Psychology
- Social Psychology
- Abnormal Psychology
- Experimental Psychology, methodology

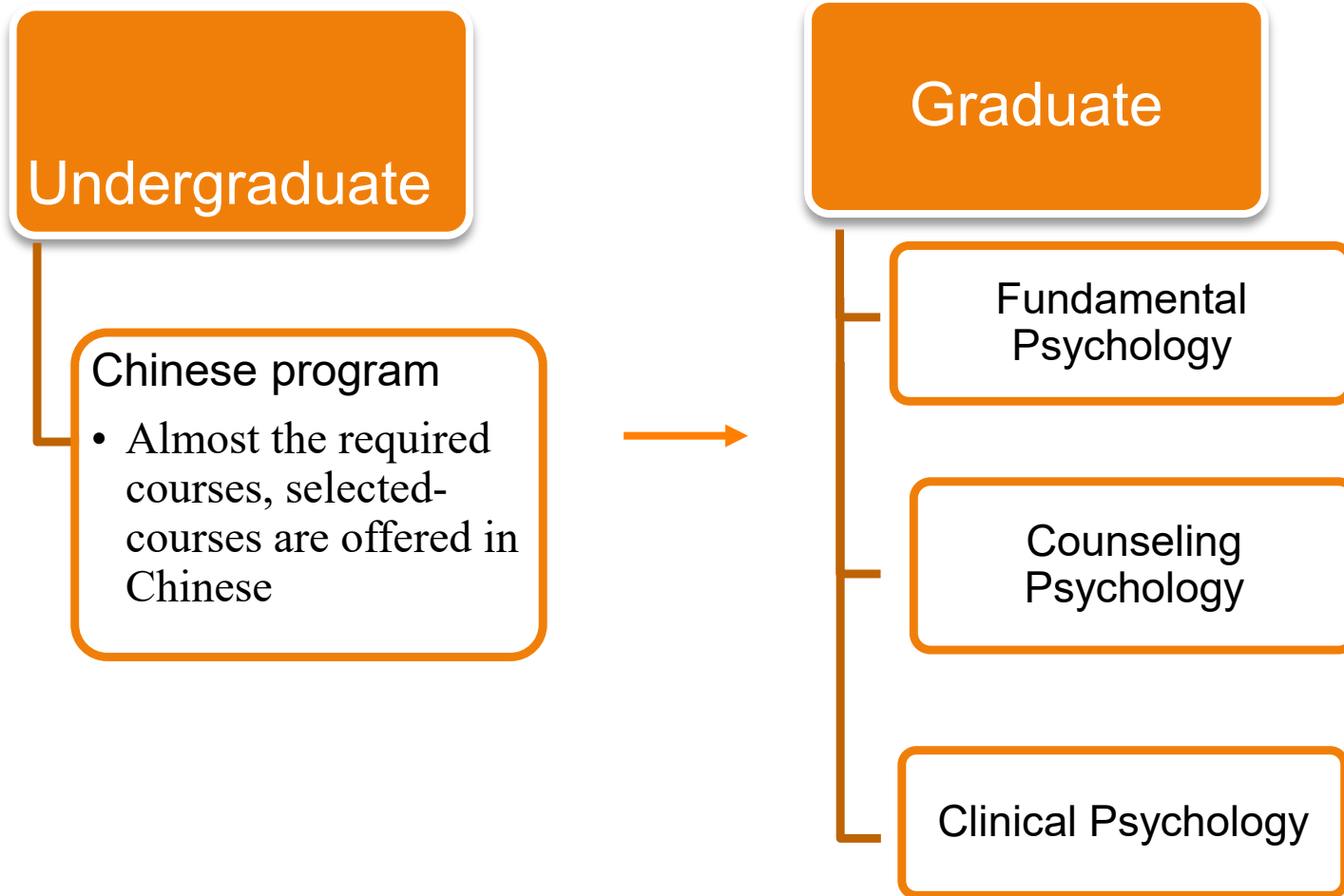
Applied Psychology

- Clinical Psychology
- Counseling and Guidance deal with difficulties, power of grow up
- Health Psychology
- Educational Psychology
- industrial and organizational psychology
- consuming psychology, advertisement psychology
- Forensic Psychology , Criminal Psychology
- Military Psychology, aeronautical psychology

Integration Approach

- Cognitive science
- artificial intelligence
- Multi- Cultural Psychology
- Positive Psychology

Program structure



Courses Map

Foundation program
of Psychology

Core Program of
Clinical and Counseling
Psychology

Program of Clinical and Counseling Psychology

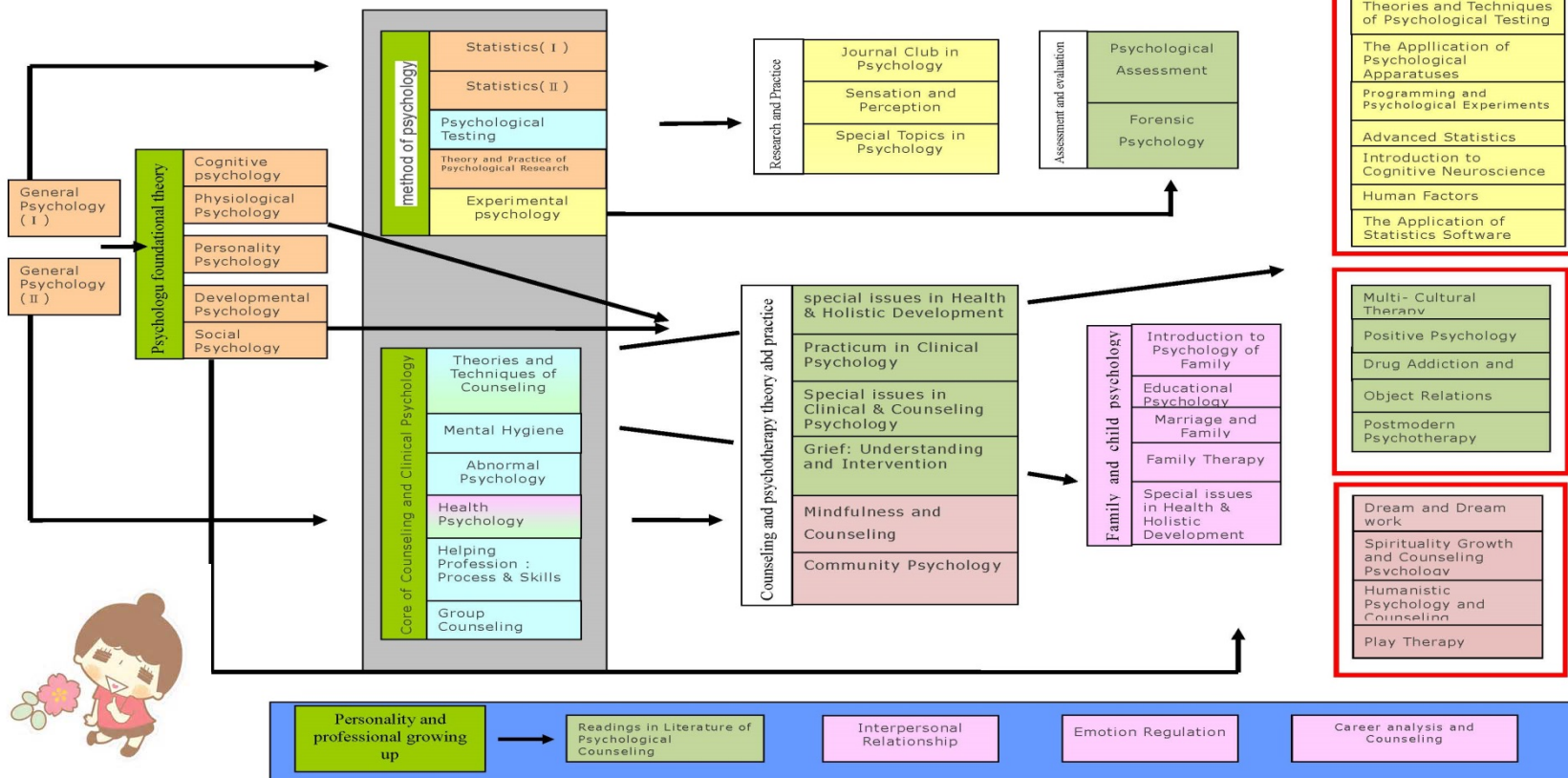
Program of Cognition and Psychometrics

freshman

Sophomore

Junior

Senior



所以你也可以這樣搭配

建議可選修之外系學程



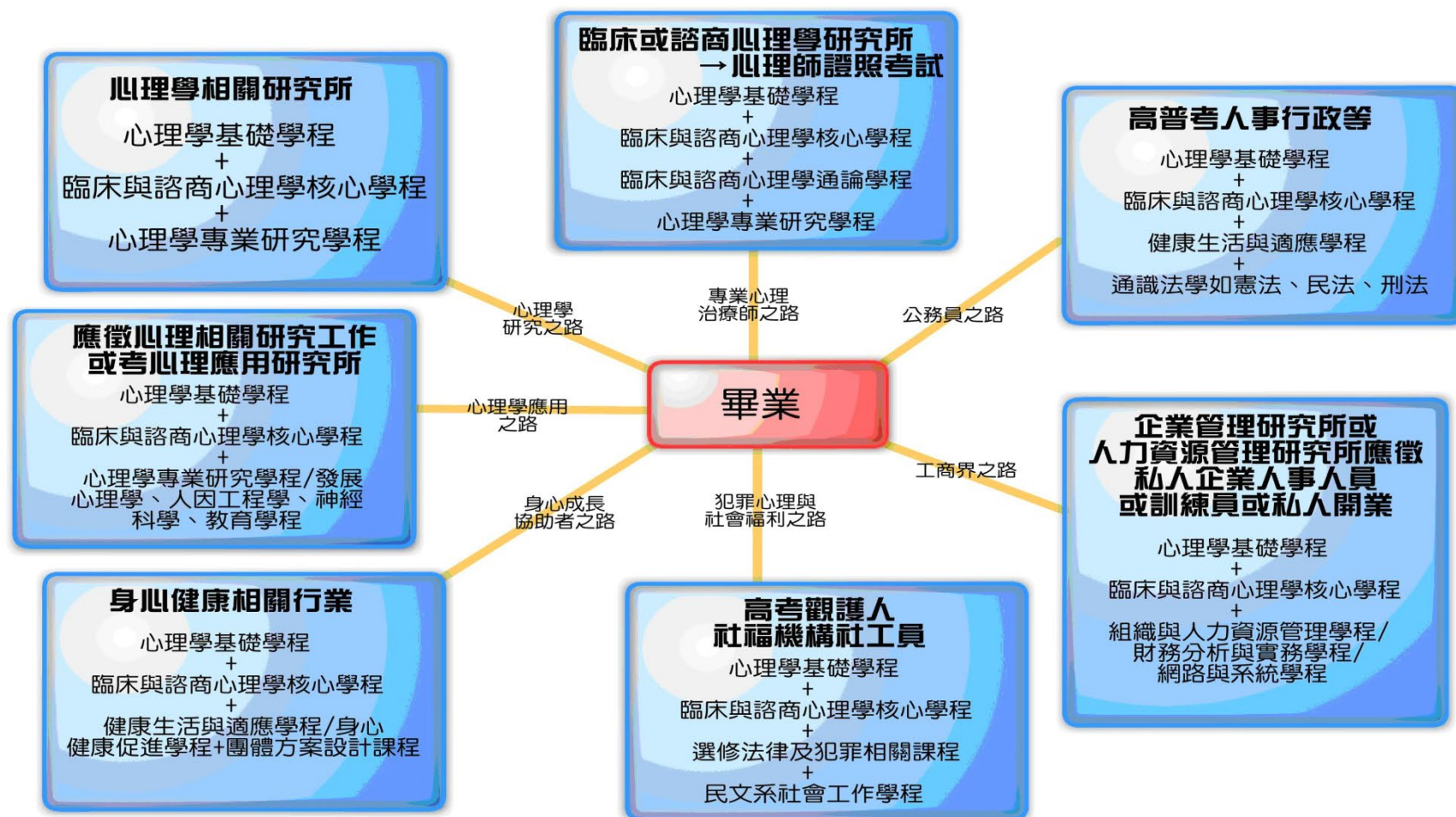
- **Community Service**
 - zootherapeutics 動物治療
 - Early intervention 西林早療服務 (翁士恆老師)
 - Service learning
- **(graduation) monograph (learning outcomes)**
 - Academic approach
 - Social care performance
 - Multiple applications of creative invention



Theories and practices

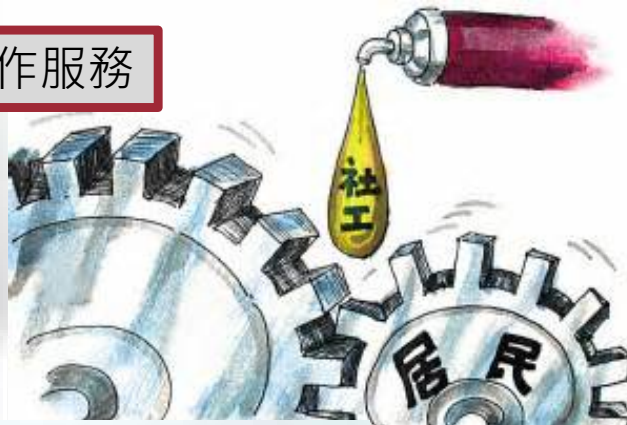
生涯進路圖

臨床與諮商心理學系生涯進路





社工工作服務



機構輔導人員



輔導人員



法院觀護人



諮商心理師



人力資管理人員



體驗教育訓練人員



臨床心理師

臨床心理 — 初步分析及諮詢

1. Understand the rules, you can become active person
2. The opportunity is to fight for yourself—SAY “YES”
3. Precipitation and meditation, be your own master
4. Construction of appropriate interpersonal networks

Equip yourself



- Give yourself an expectation,
an approach



The future me in four years